

SP SERIES

SPW30F, SPP30X, SPP30F

3 POLES, SOLDER TERMINALS OR PRINTER CIRCUIT, MOUNTING PANEL OR MOUNTABLE WITH SCREW M3



TYPE

SPW30F	Socket for 3-pole, solder terminals
SPP30F	Socket for 3-pole, printed circuit with flange
SPP30X	Socket for 3-pole, printed circuit



SPW30F



SPP30X

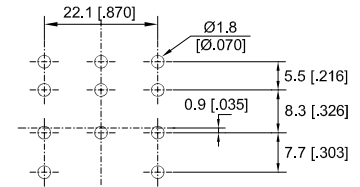


SPP30F

SPECIFICATIONS

Rated load	16 A / 400 V
Insulation	
- Coil / Contacts	4 kV
- All terminals DIN rail	4 kV
Cross-section of connecting wire	
- Single-wire	
- Multi-wire	
Max. screw torque	
Mounting	
Ambient temperature	- 40 ... + 80 °C
Weight	20 g

CONNECTION DIAGRAM



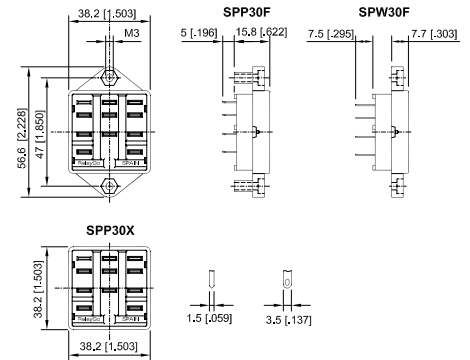
SOCKET FOR PLUG-IN RELAYS

RP2010, RP3010, RP3014, RP1015, RP1016, RP2016, RP2019

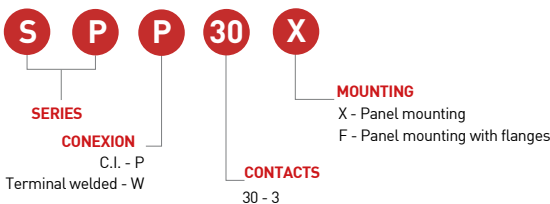
ACCESSORIES

Retaining spring, steel	AC60H
Integrated retaining plastic clip	

DIMENSIONS mm [inch]



ORDERING CODE



TECHNICAL APPROVALS



In process In process In process In process

IEC 61810; EN 60947